

Accutech Manager

Features:

- Field unit configuration interface
- Provides system diagnostics
- Powerful network management tool
- Client/server architecture

Description

Integral to the Accutech product offering is Accutech Manager, the Windows based services management software that provides a user-friendly environment for field unit configuration and diagnostics. The product also functions as an effective and useful network management tool and can be used for temporary data collection and testing. Accutech Manager is provided as a free of charge utility.

Taking advantage of its client/server architecture model, Accutech Manager may be installed on corporate LAN servers for round-the-clock operation, onto one or more PCs for multiple services management consoles (including Internet), and on a single PCs for technicians.

TECHNICAL SPECIFICATIONS

Fault and Performance Management

Fault management provides basic information on whether the process or application is on or off. Performance management provides more in-depth information on how the process or application is performing relative to known benchmarks.

The following views are available:

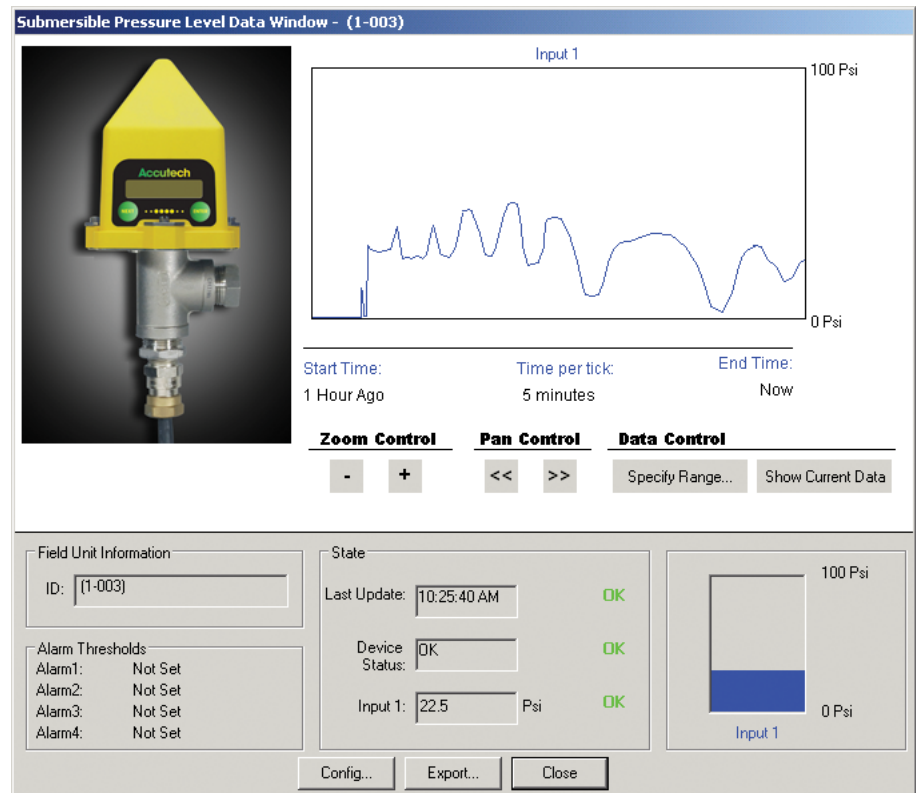
- Field Unit Groups
- Individual Field Units View
 - Tag Number
 - Monitored Equipment
 - ID
 - Device Type
 - Status

- Field Unit (Alarm) Status View
 - OK
 - Alarm1, Alarm2, etc.
 - RF Failure
 - Low Battery
- Base Radio View
 - Tag Name
 - Serial Number
 - RS-485 Address
 - # of Field Units
 - Status

Configuration Management

Configuration Management allows the user to configure and modify parameters of the field unit right from the management software. The following parameters are accessible for configuration:

- Individual Field Unit Properties
 - Sampling
- Normal Condition



- Abnormal Condition
 - Alarms
- Thresholds
- Custom Alarm Message
 - Managed Equipment
- Custom Type

Reporting and Analysis

The database stores and maintains the field unit monitoring and measurement data over time. This data can be exported to many popular software programs, such as Oracle, SQL, and Excel in order to perform analysis and to create reports. The data can be exported in the following data formats:

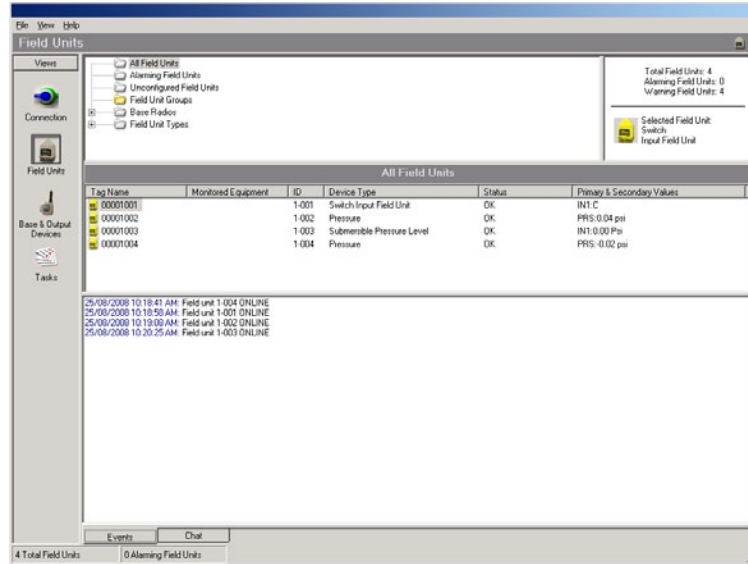
- Text (.txt)
- Comma Separated Values (.csv)

Software Architecture

- Microsoft Windows® based client/server software
- Embedded Microsoft® Access database

System Requirements, Personal Computer

- PC with 300 Megahertz (MHz) or higher processor clock speed recommended; Intel Pentium/Celeron Family, or AMD K6/Athlon/Duron Family, or compatible processor recommended.



Field Unit Status Summary View

- Microsoft® Windows® 2000 or Windows® XP operating system
- 256 Megabytes (MB) of RAM or higher recommended
- 30 Megabytes (MB) of available hard disk space; 10 Gigabytes (GB) if the database is installed on the local PC
- RS-485 port or RS-232 serial port
- CD-ROM or DVD drive
- Internet network connectivity recommended for software updates via FTP
- Windows® Server 2000 or Windows® Server 2003 operating system
- 256 Megabytes (MB) of RAM or higher recommended
- 30 Megabytes (MB) of available hard disk space; 10 Gigabytes (GB) if the database is enabled
- 10/100 MB auto-sensing network interface card, RS-485 port or RS-232 serial port
- CD-ROM or DVD drive
- Ethernet connectivity. Internet network connectivity recommended for software updates via FTP
- The database size determines hard drive disk space requirements. Requirements vary depending on individual data retention policy and database administration.

Part Number	Description
327102	Accutech Manager, configuration and diagnostics software